

Schneider Electric Prefabricated Data Center Modules

Solutions for Rugged Environments



ISO shipping containers offer a strong, secure, and environmentally sound solution for housing a datacenter that can be easily transported globally and deployed in virtually any environment and application.

Schneider Electric's containerized prefabricated modules are available as all-in-one units providing a self-contained, fully functional data center, as well as, standalone power, cooling, and IT modules that can be combined and customized upon request for large-scale deployments.

The containerized versions of our prefabricated modules are capable of accommodating solutions from 5-18 conventional racks in a 40ft container with densities starting at 3kW/rack up to 30kW/rack or higher upon request. The modules are designed according to data center industry best practices and available in standard ISO container sizes of 10, 20, and 40 ft (53ft available in North America).

Prefabricated Data Center Modules are...

...simple and repeatable

- > Deliverable in remote locations and space constrained environments
- > Pre-engineered solutions simplify design and build process
- > Deploy same basic design in multiple sites around the world

...faster to deploy than traditional datacenters

- > Pre-manufactured and pre-tested prior to delivery
- > Site preparation done concurrently with manufacturing
- > Ships in 16 weeks or less (upon design sign-off and receipt of PO)

...more predictable

- > The availability, security, efficiency and cost you expected
- > Optimized to prevent critical data loss in operation/production sites
- > Designed to withstand harsh environmental conditions

Applications

Oil & Gas

Containerized prefabricated modules are designed for easy transport to remote locations and harsh environments such as an oil production site

Additional corrosion protective coatings which meet the C5-M standard per ISO 12944 can be applied make the modules ideal for off-shore and other marine applications.



Military and Government

Modules can be designed for ganging together on-site to make up a larger more functional space while still maintaining easy transport of single units anywhere in the world

Quick connections for power, cooling and data ensure a ready to use status in minimum time.

Optional features such as anti-vibration pads, anti-ballistic armor, DoD and NATO approved locks or EMI/TEMPEST protection are common features included in our designs.



Mining

Containerized data centers provide a simple solution to provide on-site, real-time data processing and eliminating latency issues for remote locations. Minimize the cost of having to build a traditional “stick-built” data center near production sites.

Stand alone, all-in-one units can be deployed in harsh environments with air filtering and entrance vestibules to control air contaminants



Schneider Solutions

IT Modules

- Available in All-in-one, self-contained systems or as single and multi-bay IT modules supported by separate power and cooling systems.
- Configure from 5-18 racks at densities from 3 – 30kW
- Multiple cooling options – Overhead, In-Row, End-of-Row available in DX, CW, or Air Economizer
- Patented sliding rack system for full access to hot and cold aisles



Power Modules

- Power multiple IT prefabricated modules or quickly deploy back up power to existing data centers
- Modules with capacities from 250kW-1200kW
- Includes UPS, switchboards, fire suppression, monitoring, security, and cooling



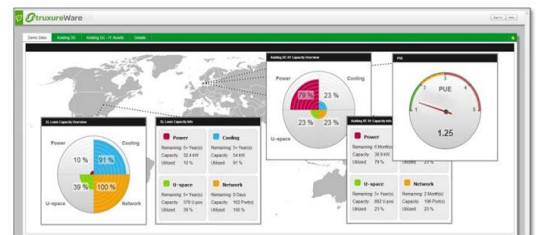
Cooling Modules

- Hydronics Module – Complete chilled water plant including pumps, drives, valves, and controls for Tier II and Tier III designs
- Indirect and direct air economizer solutions optimized for prefabricated modules
- Modules with capacities from 500kW-1200kW



Integrated Management

- Each module has an integrated management system of environmental sensors, power meters, and physical security, pre-configured for plug-and-play connection to Schneider's Struxureware suite of DCIM and operations software.



Schneider Advantages

- > Fourteen years of experience and over 450 installations globally of containerized data centers
- > Best-in-class Schneider InfraStruxure inside
- > Global support and manufacturing
- > Reference designs and local engineering support
- > Management and monitoring preconfigured – StruxureWare DCIM and Operations ready



- > Optimized cooling and power solutions
3kW – 40kW per rack
- > Space saving overhead cooling options
(DX or CW)
- > Fire resistant wall panels rated up to 2 hours

- > Patented sliding rack system allows for full access in hot and cold aisle within a shipping container
- > E-chain cable management system to protect cables when racks are moved



- > Options to meet seismic, hurricane, marine, and ballistic requirements
- > Enclosure and doors designed for IP66 environmental protection – rain, dust, wind
- > Experienced in meeting military specifications for shielding and security